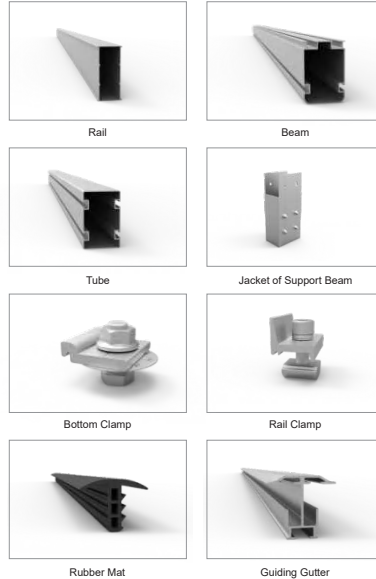
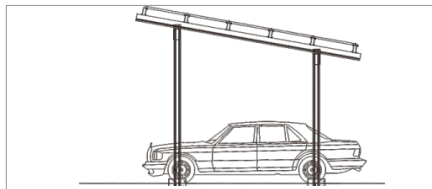


Type II Carport Mounting System

Aluminum alloy



Installation site	Ground
Inclination	0-60°
Construction height	<9m
Maximum wind speed	<60m/s
Maximum snow cover	<200cm
Material	High-strength aluminum alloy & A2-70
Surface Treatment	Anodizing or electrophoresis
Color	Silver or customized
Foundation	Concrete Foundation
	Ground Screw Foundation
Reference Standards	ASCE7-10 EN1991 AS/NZS1170 Other
Warranty	10 Years



Project Information

PV MODULE INFORMATION		PV MODULE INFORMATION	
Size	1722*1134*30mm	Module Inclination (in degree)	5 deg
Module arrangement	5 rows, 7 columns	Module Power	415W
Number of installations	35 pcs	Capacity	14525W

Arrangement



Component List

Description	Material	Specification	QTY
Rail	AL 6005-T5	5300mm	12 pcs
Rail Splice	AL 6005-T5	500mm	6 pcs
Girder Clamp	AL 6005-T5&SUS 304	40mm	72 pcs
Inter Clamp	AL 6005-T5&SUS 304	30mm	56 pcs
End Clamp	AL 6005-T5&SUS 304	30mm	28 pcs
Beam	AL 6005-T5	4800mm	3 pcs
Jacket of Support Beam	AL 6005-T5&SUS 304	350mm	6 pcs
Tube	AL 6005-T5	3250mm	3 pcs
Tube	AL 6005-T5	3530mm	3 pcs
Support Beam Cap	Q235	100mm	6 pcs
T Roof 840	Cold Rolled Steel	5000mm	15 pcs
T Hex Screw kit	SUS 304	M10*35	24 pcs
Grounding Clip	SUS 304	34*34mm	24 pcs
Grounding Lug	AL 6005-T5 & SUS 304	20mm	6 pcs